

# Traveling Tree Walk

*A Traveling Tree Walk brochure is available which provides an explanation of the benefits identified below*

## Bald Cypress

*Taxodium distichum*

\*Diameter at Breast Height (DBH): 20"

### ANNUAL VALUE of

Tree's benefits to my community:

<b>Prevents Soil Erosion</b>	<b>\$21.24</b>
<b>Reduces Energy Costs</b>	<b>\$13.54</b>
<b>Improves Air Quality</b>	<b>\$4.43</b>
<b>Increases Property Value</b>	<b>\$49.31</b>
<b>Reduces Carbon Dioxide (CO<sub>2</sub>)</b>	<b>\$2.96</b>

\*Actual tree diameter may vary which will affect the values presented.

\*\*Location of tree will also affect these values. (i.e. home, park, etc.)

\*\*\*DBH is the diameter of a tree's trunk measured at breast height (4.5 feet)

**Total Ecological Value:**

**\$91.48**



For more info on this tree species,  
scan QR code with your smartphone  
or visit: [www.sfrc.ufl.edu/4h/Trees\\_](http://www.sfrc.ufl.edu/4h/Trees_Plants/Trees/trees.html)  
[Plants/Trees/trees.html](http://www.sfrc.ufl.edu/4h/Trees_Plants/Trees/trees.html)



# Traveling Tree Walk

*A Traveling Tree Walk brochure is available which provides an explanation of the benefits identified below*

## Laurel Oak

*Quercus laurifolia*

\*Diameter at Breast Height (DBH): 36"

### ANNUAL VALUE of

Tree's benefits to my community:

<b>Prevents Soil Erosion</b>	<b>\$55.89</b>
<b>Reduces Energy Costs</b>	<b>\$25.09</b>
<b>Improves Air Quality</b>	<b>\$7.85</b>
<b>Increases Property Value</b>	<b>\$55.00</b>
<b>Reduces Carbon Dioxide (CO<sub>2</sub>)</b>	<b>\$6.15</b>

\*Actual tree diameter may vary which will affect the values presented.

\*\*Location of tree will also affect these values. (i.e. home, park, etc.)

\*\*\*DBH is the diameter of a tree's trunk measured at breast height (4.5 feet)

**Total Ecological Value:**

**\$149.98**



*Quercus laurifolia*



For more info on this tree species,  
scan QR code with your smartphone  
or visit: [www.sfrc.ufl.edu/4h/Trees\\_Plants/Trees/trees.html](http://www.sfrc.ufl.edu/4h/Trees_Plants/Trees/trees.html)



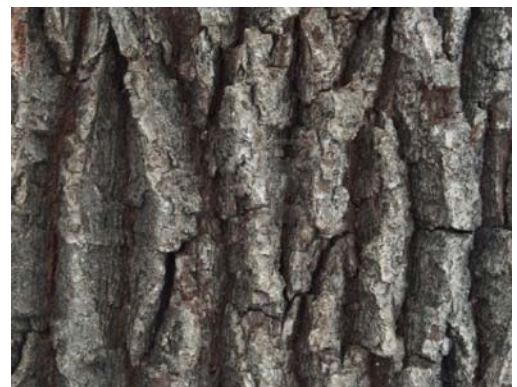
# Traveling Tree Walk

*A Traveling Tree Walk brochure is available which provides an explanation of the benefits identified below*

## Live Oak

*Quercus virginiana*

\*Diameter at Breast Height (DBH): 42"



### ANNUAL VALUE of

Tree's benefits to my community:

<b>Prevents Soil Erosion</b>	<b>\$108.62</b>
<b>Reduces Energy Costs</b>	<b>\$38.18</b>
<b>Improves Air Quality</b>	<b>\$5.13</b>
<b>Increases Property Value</b>	<b>\$63.34</b>
<b>Reduces Carbon Dioxide (CO<sub>2</sub>)</b>	<b>\$7.57</b>

\*Actual tree diameter may vary which will affect the values presented.

\*\*Location of tree will also affect these values. (i.e. home, park, etc.)

\*\*\*DBH is the diameter of a tree's trunk measured at breast height (4.5 feet)

**Total Ecological Value:**

**\$222.84**



For more info on this tree species,  
scan QR code with your smartphone  
or visit: [www.sfrc.ufl.edu/4h/Trees\\_Plants/Trees/trees.html](http://www.sfrc.ufl.edu/4h/Trees_Plants/Trees/trees.html)



# Traveling Tree Walk

*A Traveling Tree Walk brochure is available which provides an explanation of the benefits identified below*

## Longleaf Pine

*Pinus palustris*

\*Diameter at Breast Height (DBH): 15"

### ANNUAL VALUE of

Tree's benefits to my community:

<b>Prevents Soil Erosion</b>	<b>\$7.01</b>
<b>Reduces Energy Costs</b>	<b>\$6.62</b>
<b>Improves Air Quality</b>	<b>\$2.72</b>
<b>Increases Property Value</b>	<b>\$19.51</b>
<b>Reduces Carbon Dioxide (CO<sub>2</sub>)</b>	<b>\$1.01</b>

\*Actual tree diameter may vary which will affect the values presented.

\*\*Location of tree will also affect these values. (i.e. home, park, etc.)

\*\*\*DBH is the diameter of a tree's trunk measured at breast height (4.5 feet)

**Total Ecological Value:**

**\$36.87**



For more info on this tree species,  
scan QR code with your smartphone  
or visit: [www.sfrc.ufl.edu/4h/Trees\\_Plants/Trees/trees.html](http://www.sfrc.ufl.edu/4h/Trees_Plants/Trees/trees.html)



# Traveling Tree Walk

*A Traveling Tree Walk brochure is available which provides an explanation of the benefits identified below*

## Red Maple

*Acer rubrum*

\*Diameter at Breast Height (DBH): 24"



### ANNUAL VALUE of

Tree's benefits to my community:

<b>Prevents Soil Erosion</b>	<b>\$26.01</b>
<b>Reduces Energy Costs</b>	<b>\$11.15</b>
<b>Improves Air Quality</b>	<b>\$3.98</b>
<b>Increases Property Value</b>	<b>\$27.70</b>
<b>Reduces Carbon Dioxide (CO<sub>2</sub>)</b>	<b>\$1.74</b>

\*Actual tree diameter may vary which will affect the values presented.

\*\*Location of tree will also affect these values. (i.e. home, park, etc.)

\*\*\*DBH is the diameter of a tree's trunk measured at breast height (4.5 feet)

**Total Ecological Value:**

**\$70.58**



For more info on this tree species,  
scan QR code with your smartphone  
or visit: [www.sfrc.ufl.edu/4h/Trees\\_Plants/Trees/trees.html](http://www.sfrc.ufl.edu/4h/Trees_Plants/Trees/trees.html)



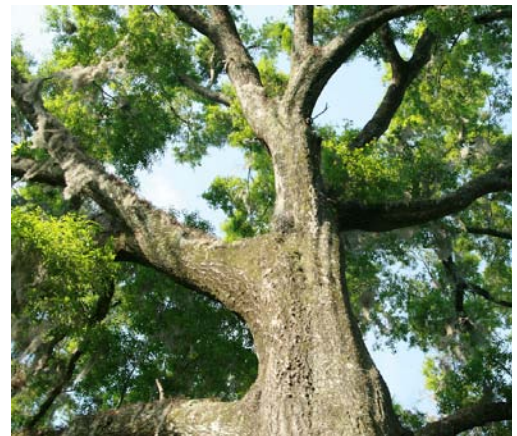
# Traveling Tree Walk

*A Traveling Tree Walk brochure is available which provides an explanation of the benefits identified below*

## Water Oak

*Quercus nigra*

\*Diameter at breast height (DBH): 30"



### ANNUAL VALUE of

Tree's benefits to my community:

<b>Prevents Soil Erosion</b>	<b>\$41.82</b>
<b>Reduces Energy Costs</b>	<b>\$20.81</b>
<b>Improves Air Quality</b>	<b>\$6.62</b>
<b>Increases Property Value</b>	<b>\$56.17</b>
<b>Reduces Carbon Dioxide (CO<sub>2</sub>)</b>	<b>\$4.99</b>

\*Actual tree diameter may vary which will affect the values presented.

\*\*Location of tree will also affect these values. (i.e. home, park, etc.)

\*\*\*DBH is the diameter of a tree's trunk measured at breast height (4.5 feet)

**Total Ecological Value:**

**\$130.41**



For more info on this tree species,  
scan QR code with your smartphone  
or visit: [www.sfrc.ufl.edu/4h/Trees\\_  
Plants/Trees/trees.html](http://www.sfrc.ufl.edu/4h/Trees_Plants/Trees/trees.html)

